

Autumn Leaves

and CreativiTEA

New England Traditions
October 5–10, 2021
Marlborough, Massachusetts
Our 22nd Year Together!



Welcome to Autumn Leaves & CreativiTEA (finally)!

Dear Decorative Painting Friends,

The New England Chapters Council and the New England Traditions Team are excited to present **New England Traditions 2021!** Fall in New England is the perfect time to experience this premiere regional decorative painting event. Gather your friends and join us as we celebrate **our 22nd year!**

Again, this year, we are together **Under One Roof**, so you can paint and shop in your slippers to your heart's content! Our Exhibit Hall will fill the Ballroom at the Best Western Royal Plaza with surfaces, patterns, brushes, gadgets, and inspiration. Your sneak peek is Thursday evening!

Nancy Scott, CDA, our theme artist, welcomes us graciously to steep ourselves in **Autumn Leaves & CreativiTEA** at NET 2021. You'll find classes in a variety of mediums for all levels of painters from newbie to veteran. Our **Intro 101 Try Me! Classes** give new painters—or more experienced painters who want to try a new medium—the opportunity to learn in a nurturing, right-paced environment. Give it a try!

Get the week underway with our **Kick-off Class** on Tuesday evening as we create a Christmas treasure. Friday evening, our NEW Italian buffet offers a convenient way to grab a nice dinner before you mix and mingle at our friendly **GAME NIGHT** featuring Artists' Bingo with prizes galore and fall snacks.

Don't forget to grab some **NET MERCHANDISE** as you register—you'll have "presents" waiting for you when you arrive—what fun!

Until October, stay in touch with all things NET by visiting our website at **www.newenglandtraditions.org**. You can also find New England Traditions on Facebook...Like and Share!

Mark your calendar for **October 5–10** and come nurture your creativity...we're excited to share this art-full adventure with you!

In friendship,

Robin MacKenzie Prout

New England Traditions 2021
chair@newenglandtraditions.org



WHAT'S INSIDE:

Schedule.....	page 3
Information.....	3-5
Housing.....	6
Special Events.....	7
Classes	8–30
Merchandise.....	31
Basic Supplies by Medium	32
Special Supplies by Class.....	33–35
Registration Form	36
Registration Check List.....	37
Teacher Index.....	38



NET 2021

TUESDAY—OCTOBER 5

- 1:00 p.m.–6:00 p.m. Teacher Class Sample Drop-off
4:30 p.m.–6:00 p.m. "Early Bird" Registration
6:00 p.m.–10:00 p.m. Kick-off Event: Christmas Ornament Jar

WEDNESDAY—OCTOBER 6

- 7:00 a.m.–9:00 a.m. Teacher Class Sample Drop-off
7:00 a.m.–6:00 p.m. Registration, Class & Game Night Sales
7:00 a.m.–8:00 p.m. Class Display
7:00 a.m.–10:00 p.m. Volunteer Center
8:00 a.m.–6:00 p.m. Exhibitor Move-in & Set-up
8:00 a.m.–10:00 p.m. Classes
10:00 a.m.–4:00 p.m. Teacher Demos

THURSDAY—OCTOBER 7

- 7:00 a.m.–6:00 p.m. Registration, Class & Game Night Sales
7:00 a.m.–6:15 p.m. Class Display, Volunteer Center
8:00 a.m.–6:00 p.m. Exhibitor Move-in & Set-up
8:00 a.m.–6:00 p.m. Classes
10:00 a.m.–4:00 p.m. Demos
6:30 p.m.–9:00 p.m. Spenders and Vendors

FRIDAY—OCTOBER 8

- 7:00 a.m.–6:00 p.m. Registration, Class & Game Night Sales
7:00 a.m.–8:00 p.m. Class Display
7:00 a.m.–10:00 p.m. Volunteer Center
8:00 a.m.–10:00 p.m. Classes
8:00 a.m.–12 noon **Convention Artist Special Event with Nancy Scott, CDA**
9:30 a.m.–6:00 p.m. Exhibit Hall Open to Public
10:00 a.m.–4:00 p.m. Demos
5:30 p.m.–8:30 p.m. **Italian Buffet Dinner (ticket required)**
7:30 p.m.–10:00 p.m. **NET-SET-GAME NIGHT! (ticket required)**

SATURDAY—OCTOBER 9

- 7:00 a.m.–5:00 p.m. Registration, Class Sales
7:00 a.m.–8:00 p.m. Class Display, Volunteer Center
8:00 a.m.–8:00 p.m. Classes
9:30 a.m.–6:00 p.m. Exhibit Hall Open to Public
10:00 a.m.–4:00 p.m. Demos
6:00 p.m.–8:00 p.m. Teacher Class Sample Pick-up

SUNDAY—OCTOBER 10

- 7:00 a.m.–8:00 a.m. Registration, Class Sales
7:00 a.m.–12 noon Class Display
Teacher Class Sample Pick-up
7:00 a.m.–12:30 p.m. Volunteer Center
8:00 a.m.–12 noon Classes

NECC and the NET Team will be following State of Massachusetts health guidelines for NET 2021. By August 15, we will assess these guidelines and make a final decision on moving forward with, or canceling, NET 2021. In the event of a cancellation by NECC, all payments received from registered attendees will be refunded, and you can cancel your hotel room block reservation without penalty.

REGISTRATION POLICIES

Registration opens May 15, 2021.

Online Registration: Use the link provided on our website at newenglandtraditions.org. Our secure registration site is managed by RegFox, a division of Webconnex, and will be monitored closely by NET. You will be able to register, select your classes and special events, and purchase merchandise on this site. You will receive immediate confirmation of your purchases at the end of the online registration process. Use the registration form included in this catalog as a worksheet so you have all your information handy when you register online. Online registration will be open until September 30. After that date, please contact Registration Chair Ronnie Brate via email at registration@newenglandtraditions.org for arrangements to make your registration by phone.

Registration the Old-Fashioned Way: If you wish to register by regular mail, please use the form provided in this catalog. (A photocopy is fine.) Please type or print clearly and complete the entire form. Make a copy for your records and send the completed form with your credit card information, check, or money order in U.S. funds (payable to New England Traditions) to: **Ronnie Brate, 31 Sawyer Place, Albany, NY 12208**, no earlier than a May 5 postmark. Registrations received by May 15 will be processed as online registration goes live so there is no advantage or disadvantage to sending in your registration by mail. Preliminary confirmation of your purchases will be mailed or emailed to you within two weeks of receiving your mailed-in registration.

Full Registration for New England Traditions is \$80; after September 1, 2021, the fee is \$90. Full registration includes a Conference Program book, admission to the Exhibit Hall including the opening Spenders and Vendors Event, and all displays and demonstrations. It also qualifies registrants to enroll in classes and events offered Tuesday through Sunday. Individual fees for classes and events are not included in registration.


Partial Registration: Daily registration at the cost of \$32 per day (\$37 per day after September 1; Sunday \$10) allows you to register for classes and visit the Exhibit Hall on a specific day or days. It also includes a Conference Program book and admission to all displays and demonstrations on that day(s). We hope this flexible

registration option will encourage even more painters to join us for New England Traditions 2021! **Please read the registration information carefully to register correctly for this option.**

REMEMBER: Registrations will not be processed until full payment is received. There will be a \$30 charge (U.S.) for returned checks. Registration position will then change from the postmark date to the date your check clears the bank.

Official confirmations will be mailed in August listing all classes and events for which you are registered. Be sure to carry this confirmation at all times during Convention as it is your admission ticket for all classes for which you are registered. There is a \$2 charge for confirmation duplicates at Convention. If you have questions about registering, contact Ronnie Brate at (518) 410-4716, or e-mail her at registration@newenglandtraditions.org. Registration name badges will be issued to registrants and are required for admittance to classes, special events, the Exhibit Hall, and to purchase additional classes at the Class Sales table. You do not have to be a member of the Society of Decorative Painters, an SDP chapter, or any other painting organization to register. Every registrant will receive a raffle ticket for our Registered Attendees Raffle with a fabulous prize painted by our Convention Artist, Nancy Scott, CDA.

Admission to the Exhibit Hall is available for a **DAILY FEE of \$5 on Friday and Saturday**, for unregistered attendees. Due to safety concerns, strollers, and wheeled painting carts are to be stored near the Exhibit Hall Admission table upon arrival. Wheeled shopping bags are allowed.

 **Attendee Cancellation Policies:** If NECC finds it necessary to cancel the NET convention this year, a decision will be made by August 15, 2021, and all funds received from registrants (registration, class fees, game night and Italian dinner fees as well as merchandise pre-order fees) will be refunded. This will only happen if NECC cancels the convention. Otherwise, our normal cancellation policy remains in effect, as follows:

Individuals cancelling will be refunded 50% of the registration fee paid, providing the request is made in writing to Registration Chair **Ronnie Brate, 31 Sawyer Place, Albany, NY 12208**, and postmarked before September 1, 2021. Project and class fees are only refundable until July 15, 2021, after which time they cannot be refunded. After September 1, 2021, there will be NO refunds. The NET team will help with the collection of class surfaces and materials at convention to mail to the cancellee at the cancellee's expense.

CONVENTION PARTICULARS

Special Events: We are pleased to offer these art-full experiences with some of your favorite decorative artists.

Tuesday Evening Kick-off Class!

Join Tami Carmody for a great way to kick-off our time together...

Paint with our Convention Artist on Friday!

This sweet little teapot will make a perfect addition to your home or a gift for a loved one. Join Nancy Scott, CDA, for a lovely morning!


Friday Night Italian Buffet Dinner, 5:30–8:30 p.m.!

New this year, we are selling tickets for a yummy buffet in the hotel courtyard. Avoid the long waits at area restaurants on this busy holiday weekend. Delizioso!

Demonstrations: New techniques and products headline this always interesting and informative program. Learn from the talented artists who share their knowledge throughout the week. Demos will be held in the Hotel lobby. Please check the schedule in your program book when you arrive for the exact times and location.

Spenders and Vendors: Registered attendees get to kick off our NET 2021 Under-One-Roof shopping extravaganza Thursday evening! So exciting after a year apart!

GAME NIGHT! Done with painting for the day, but not quite ready to call it a night? Join us for a relaxing evening of fun and friendship in Zachary's Restaurant from 7:30–10:00 p.m. (or any part thereof) to mix, mingle, and enjoy some friendly competition! Bring a deck of cards, your favorite board games, or enjoy our group rounds of Bingo. Hand-painted door prizes will be offered throughout the evening, and there will be a few surprises for lucky bingo winners. Bring your favorite beverage from the bar, and join us for snacks as we have some fun. You do not need to be registered for NET to attend. Tickets will be available for purchase until they run out. Get ready to play!

 **Have Extra Time? Be a Monitor!** Some teachers are in need of helpers as they set up their classrooms, check in students, pass out supplies, and walk samples around the room during class. Please check "yes" for class monitor at the bottom of your registration form and our Volunteer Chairs will contact you to discuss the classes for which you are available. This is a rewarding way to help, so please sign up! All of your volunteer hours accumulate for the special handpainted keepsake teapot volunteer pin! This treasure marks six hours of volunteering at NET!

ABOUT OUR CLASSES

Included with each class photo is the class length, medium used, and skill level. It is necessary to be registered for New England Traditions in order to sign up for classes. The total fee assigned to each class includes teacher fees, surface and materials fees, and applicable sales tax.

Special Supplies Required: The special supplies required, listed on pages 33–35, are those the teacher has specifically requested for that class. Remember that you are also expected to bring the usual painting supplies for the medium in which you are working (see page 32). Only odorless solvents may be used in our classrooms. They are limited to small amounts stored in closed containers. It is suggested that you bring small containers to take extra paint with you for completing your projects.

Skill Levels: To assist you in selecting classes, each project has been assigned a skill level by the teacher.

Beginner: For students with knowledge of the fundamentals of the medium. Taught at a slow pace with teacher assistance.

Intermediate: For students with a good understanding of the fundamentals who are proficient in that medium. Taught at a moderate pace with some teacher assistance.

Advanced: For students with advanced skills in that medium. Taught at a brisk pace with minimal teacher assistance.

Intensive Study: Provides extended time to learn skills and techniques or a challenging experience for intermediate/advanced painters proficient in that medium. See class descriptions for specific information.

Use these guidelines when selecting classes, and please do not exceed your abilities. Do not enroll in an advanced class if you have been painting a short while. When you choose a medium with which you are unfamiliar, select a beginning project. Requesting classes beyond your skill level may create a hardship for the teacher and other students in the class. If you are an advanced teacher/student taking a class for a possible teaching project, please keep in mind the teacher is teaching that class at the level advertised only. We hope this information helps you make your class experience successful.

OF PARTICULAR NOTE:

Intro 101 Try Me! Classes—These classes introduce a new medium or artform to new painters or to experienced painters who want to give something new a try. Check out our offerings in Oils, Watercolors, Acrylic Tools, and Colored Pencils this year. Trying something new is good for you!

Class Selection: Classes will be assigned on a first-reserved basis. When you fill out your form for mail-in registration, please list classes in order of preference, and include two choices for each time period in case your first choice is full. You may register for as many classes as your schedule will allow. To limit the number of classes assigned, such as one per day, please indicate that on your registration form.

It is difficult to know how much money to send with mail-in registration, as it is not certain which classes will be assigned. Remember, you cannot be assigned more classes than the total payment received for them. To be sure you don't miss a class because of insufficient funds, add up the most expensive classes you've selected in each time period and send that amount. If you send more money than is required for the classes you are assigned, a refund will be included in your registration packet at New England Traditions. Using your credit card will enable us to charge you for the exact amount due.

Class Sales: New England Traditions does not repurchase classes or refund class or project fees if you are unable to attend. However, a resale bulletin board will be set up near Registration if you would like to attempt to sell your classes or purchase available classes. Class resale can only be initiated if that class is sold out, as the teacher has prepared for the registered number of attendees. While we work hard to avoid canceling classes, we reserve the right to do so for any class with insufficient enrollment. Please don't delay in registering to help us in preparing a great convention experience for you!

New! Friday Night Italian Buffet

*5:30 p.m.—8:30 p.m., \$17, all inclusive!
Make your reservations through class registration
and your Friday night dinner plans are set.*

*Stuffed Shells with Marinara Sauce, Meatballs,
Garden Salad, Garlic Bread Sticks, and
Assorted Italian Pastries will be available in the hotel
courtyard...avoid the lines at local restaurants!*

Surface Pick-up Notice: In the event you cannot attend or stay for a class for which you are registered, please pick up or arrange for the pick up of your surface and instructions from the classroom within the first hour of class. This is the responsibility of the student, not NET. If you designate a friend to pick up your surface, that person must have your class confirmation sheet and a note from you or from the Registration Chair authorizing this action. To minimize class disruption, please attempt to pick up surfaces before class begins. Classrooms are open one half hour prior to the start of class. Once classes have been underway for one hour, those surfaces that haven't been picked up will be forfeited.

PLEASE NOTE

There is a **NO-SMOKING POLICY** in the classrooms and other meeting rooms being used for New England Traditions. The Best Western Royal Plaza Hotel is a smoke-free facility.

NO PHOTOGRAPHY OR VIDEOTAPING, including cell phone cameras, is allowed in the Exhibit Hall and Class Display area. If you would like to take photographs in your classroom, please ask the teacher for permission.

PAINTS, FINISHES, AND SOLVENTS will be used throughout the Hotel, and other locations appointed for classroom, demo, and exhibiting. Please evaluate your health status before choosing to participate in these portions of Convention. NET and the New England Chapters Council assume no liability for health status while using any painting-related products.

NEED A ROOMMATE? Check the appropriate box on your registration form and our Registration Chair will put you in touch with others who would like to share a room.

ACCESSIBILITY SERVICES

Scooter rentals may be obtained through **Boston Orthopedic & Respiratory**. Rates are dependent on individual needs. They will deliver and pick up the scooters. To make your reservation, **call 617-337-5133**. Mention you are with the New England Traditions convention to receive 10% off. Please let the hotel know of the drop-off schedule so the hotel staff can be prepared to receive your equipment.

Housing Information



If you have already made your Best Western Royal Plaza hotel reservation, PLEASE contact the hotel to ensure you are counted in the New England Traditions room block and receiving the lowest rate!

Best Western Royal Plaza Hotel

181 Boston Post Road West, Marlborough, Massachusetts 01752

Directions: Take exit 24B off I-495 (6 miles north of I-90 Mass Turnpike). Entrance to hotel is one mile ahead on the right.

**Reservations: (508) 460-0700 \$119 for singles or doubles
\$119 for triples
\$119 for quadruples**

When making reservations, **be sure to reference New England Traditions for the group rate.**

The cut-off for our room block rates will be **September 20, 2021.**

We anticipate a sold-out room block, so reserve early!

Overnight stays include **FULL BREAKFAST BUFFET** (redeemed at Zachary's Restaurant in the hotel).

Rollaway bed rental is \$18 per bed per night, and is subject to prevailing state and city taxes.

Refrigerators and microwaves in every guest room.

The Royal Plaza Hotel is just minutes from I-495, I-290 and the Mass Turnpike/I-90.

Hotel rooms and features include voice mail and data ports in all rooms, complimentary high-speed wireless Internet, coffee/tea maker and iron and free local calls. Check-in: 4 p.m. Check-out: 11 a.m. Parking is free.

Hotel amenities: All-Star Bar and Grill, Zachary's Restaurant, indoor heated pool, fitness room, game room, and free parking. For your convenience, a Grab and Go food area has been added near the lobby of the hotel. A number of casual dining restaurants are within one half mile, including Panera, Subway, Chick-fil-A, Chipotle, Longhorn Steakhouse, Ninety-Nine, 110 Grill, Indian, Japanese, Chinese, Italian, and more.

Shuttle Service: Knight's Airport Limousine shuttle service serving Logan International Airport (Boston), T. F. Green Airport (Providence, RI), and Amtrak Providence, RI, give group rates (the more who share a ride, the cheaper the rate per person). Call 1-800-822-5456 or make reservations online.

Twenty-four-hour service is available and all major credit cards accepted.

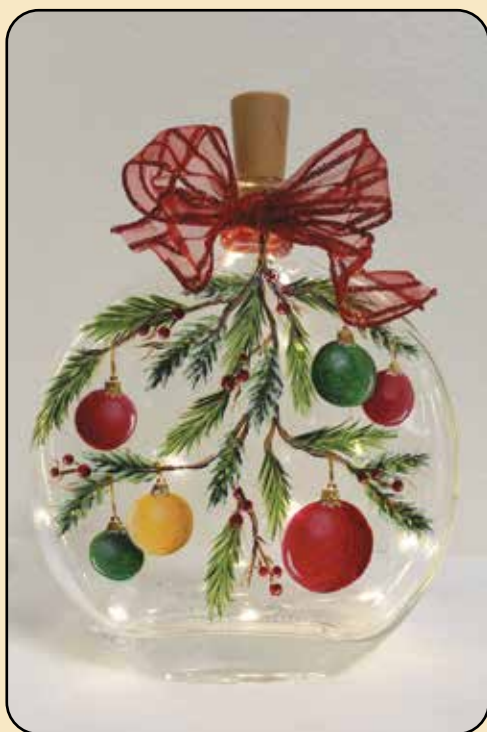
All hotel rates are subject to applicable state and local taxes.

Currently taxes are 11.7% and are subject to change.

Convention Kick-off Event!

Tuesday 6 p.m.—10 p.m.

#999—4 hours



Christmas Ornament Jar *with* *Tami Carmody*



Beginner/Intermediate—\$51.56

Glass Enamels

6" Glass Jar, Lights & Ribbon included

Learn all my tips and tricks about enamel
paints on glass. I LIGHT UP!

See supply list on page 33.



Convention Artist Event!

FRIDAY 8 a.m.—12 noon

#3060—4 hours

Christmas Tea

with Nancy Scott, CDA

Intermediate—\$44.25

Acrylic, Bisque Teapot Planter,
7" wide x 4" tall

Come paint this sweet little
bisque teapot adorned with
a Christmas poinsettia and
woodland accents.

Enjoy a homemade sweet treat and
maybe even win a door prize!

See supply list on page 34.



SPECIAL KICK-OFF EVENT

TUESDAY 6 p.m.–10 p.m.

#999—4 hours

Christmas Ornament Jar *Tami Carmody*

Beginner/Int.—\$51.56
Glass Enamels, Glass Jar incl.
Lights & Ribbon, 6"

*Learn all my tips and tricks
about enamel paints on glass.
I LIGHT UP!*



WEDNESDAY 8 a.m.–12 noon

#1010—4 hours



Summer Geraniums *Janice Cormier*

Beginner/Intermediate—\$44.78

Acrylic, Tin Plate incl. Decoupage Paper, 9.875"
*Paint the lazy days of summer on this decoupage background.
Dry brushing and floated color techniques will be reinforced.*

WEDNESDAY 8 a.m.–12 noon

#1020—4 hours



Waiting for San-Tea-Claus *Paulette DiGesare*

Intermediate—\$44.25

Acrylic, (2) Wood Ornaments

*These little mice are cozy with their blankets and tea-bag
pillows waiting to adorn your tree.*

WEDNESDAY 8 a.m.–12 noon

#1030—4 hours



Hanging Around *Cindy Makowski*

Beginner—\$49.56 Scratch Art with Acrylic Tints, Clay Scratch-
bord incl. All Scratchbord Tools & Glove, 8" x 10"

*Who doesn't love a koala? Bring him to life with your scratch art tool.
Add a touch of color with fluid acrylics for an extra level of detail.*

WEDNESDAY 8 a.m.–12 noon

#1040—4 hours

Defying Gravi-tea

Bonnie Rae-Smith

Beginner/Int.—\$54.88

Acrylic, Metal Dish & Metal
Teapot incl. Dish, Teapot,
Tubing, Bolt, Greenery,
Flowers & Stone Weights, Dish
8" Round, 32 oz. Teapot,
Approx. 15" tall completed
*Illusionary Dish Garden: Paint a
little teapot short and stout; create
faux water to pour from its spout.
Tin, hot glue, acrylic, and magic!
Finish with artificial flowers to
create an illusionary dish garden.*



WEDNESDAY 8 a.m.–12 noon

#1050—4 hours

INTRO 101—TRY COLORED PENCIL!

Gnome Greeting *Julie Talarski*

Beginner—\$30.44

Colored Pencil, Mi Tientes
Greeting Card, 8.5" x 11"

*This is an introduction to colored
pencil art. Students will have
the opportunity to experience a new
medium without having to invest
in supplies. Learn basic applications
and blending techniques. We will
then use some of these techniques
to create a greeting card.*



WEDNESDAY 8 a.m.–12 noon

#1060—4 hours

Punkin' Pete

Maxine Thomas

Intermediate—\$52.75
Acrylic, Wood Frame
w/Insert, 18" x 8.25"

Always fun to paint fall... cozy and colorful. This project will take you from Halloween to Thanksgiving and is in a frame where you can insert other seasons...bonus!



WEDNESDAY 8 a.m.–3 p.m.

#1070—6 hours



Bird on a Brush *Rosemary Barrett*

Beginner/Intermediate—\$35.44

Acrylic, Wood, 1.5" x 8" x 8"

A skill building class. Learn glazing techniques, achieve realistic shading and highlights, adding to your knowledge and joy of painting.

WEDNESDAY 8 a.m.–3 p.m.

#1080—6 hours



Autumn Glory *Gini Deaton*

Beginner/Intermediate—\$65.19

Oil, Canvas, 20" x 16"

Learn to paint the light in this fall scene with a beautiful old tree.

WEDNESDAY 8 a.m.–3 p.m.

#1090—6 hours



A New Lace *Arlene Linton*

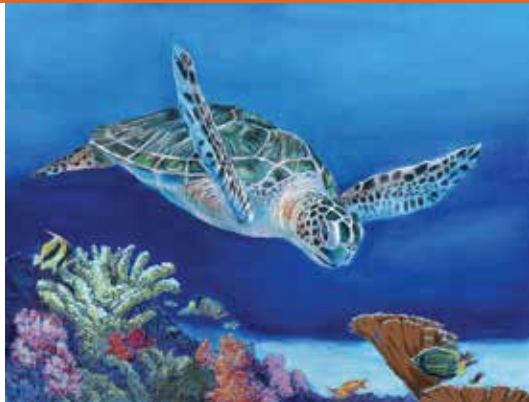
Beginner—\$54.56

Acrylic, Wood Plate, 6"

Learn to paint faux lace netting and become more proficient at linework.

WEDNESDAY 8 a.m.–3 p.m.

#1100—6 hours



Loggerhead Turtle *Mark Menendez*

Beginner/Intermediate—\$54.56

Colored Pencil, Canson Mi-Tientes Paper, 8.5" x 11"
Graceful marine life.

WEDNESDAY 8 a.m.–3 p.m.

#1110—6 hours



Quiet Night *Mark Polomchak*

Intermediate—\$65.19

Watercolor, Illustration Board incl. Paint Palette, 15" x 20"
Create a soft winter scene using masking fluid and monotone color. You will also learn to understand depth in watercolor.

WEDNESDAY 8 a.m.–3 p.m.

#1120—6 hours



Pumpkins For Sale *Judy Ribitch*

Beginner/Intermediate—\$57.75

Acrylic, Wood Wall Plaque, 16" x 12"

Learn to use drybrushing to create realistic pumpkins and leaves.

WEDNESDAY 8 a.m.–3 p.m.

#1130—6 hours

Packages Delivered

Sonja Richardson

Advanced—\$65.19

Acrylic, Large Wood Ornament, 14"

Learn an easy Santa face and how to create a fun background. This project covers many techniques and all the trimmings to create a beautiful piece.



WEDNESDAY 8 a.m.–3 p.m.

#1140—6 hours



Sunflower Trio *Beth Wagner*

Intermediate—\$62.00

Acrylic, (3) Stretched Canvas, 12" x 12", 8" x 8", 6" x 6"

Paint these three paintings to form a beautiful trio. Learn to paint a lively background and enhance with stencils. Each painting features a variety of sunflowers.

WEDNESDAY 8 a.m.–5 p.m.

#1150—8 hours



No Friends Like Snow Friends *Lynne Andrews*

Beginner/Intermediate—\$60.50
Acrylic, Pine Raised Wood Panel incl. Marker Pen, 16.25" x 7.25"

Lynne will cover stippling, her technique for floating color, line work and everything in between. What a fun, whimsical idea!

WEDNESDAY 1 p.m.–5 p.m.

#1160—4 hours

Sue's Vase

Bonnie Frederico, CDA

Intermediate—\$38.94

Colored Pencil, Bristol Vellum Paper, 8" x 10"

Learn how to make realistic flowers by layering and blending and a cut glass vase by incising.



WEDNESDAY 1 p.m.–5 p.m.

#1170—4 hours

INTRO 101—PAINTING TOOLS

Acrylic Painting Tools 101

Anne Hunter

Intro 101—\$44.78

Acrylic, Wood Ornament, 5" x 5"

Basic Tools for Better Results—Let's talk about why using the right size and quality helps; the important role brush basins, waxed palettes, and brush cleaners have in achieving better results. Then, put it all together to paint a keepsake ornament.



WEDNESDAY 1 p.m.—8 p.m.

#1180—6 hours



Secluded Stream *Marlene Fudge, CDA*

Intermediate—\$60.94
Acrylic, Door & Panel
(2 Piece), 10" x 20"

Learn to create a beautiful landscape using many different techniques. You will also learn an easy faux finish for the wooden door.

WEDNESDAY 1 p.m.—8 p.m.

#1190—6 hours



Autumn Hues *Mary Svenson, CDA*

Intermediate—\$70.50
Acrylic, Wood Plate incl. Paint Pots with Paint, 14"
This attractive project uses multiple techniques and strokework to manage color flow throughout the design.

WEDNESDAY 1 p.m.—10 p.m.

#1200—8 hours

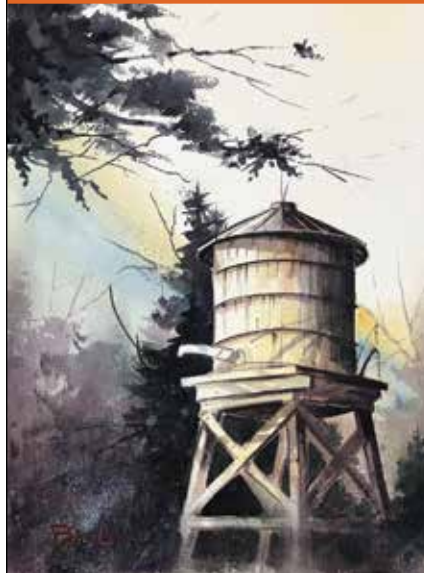


Camping in the Adirondacks *Vicki Ferrusi*

Advanced—\$56.25
Acrylic, Birch Panel incl. Comb Chip Brush, 11" x 24" x .25"
Learn faux bark, birch sticks and all things woody. This painting will give you the feeling of being in the middle of the Adirondacks.

WEDNESDAY 4 p.m.—8 p.m.

#1210—4 hours



Water Tower *David Bailey*

Intermediate—\$54.88
Watercolor, Pebbled Art Board incl. Paint Palette, 15" x 20"

This is a simple painting with a country feel.

WEDNESDAY 4 p.m.—8 p.m.

#1220—4hours



Fall Glass Block *Tami Carmody*

Beg./Intermediate—\$52.75
Glass Enamels, Glass Block incl. Lights & Ribbon, 6" x 6"

Learn to paint with Enamel paints from start to finish on a glass block. Add lights and ribbon for a Harvest Night light.

WEDNESDAY 4 p.m.—8 p.m.

#1230—4 hours



Hearts, Holly & Bells *Judy Coates*

Intermediate—\$20.25
Acrylic, (3) Wood Ornaments, 4" x 5"

Fun fast ornaments. Great for boutiques.

WEDNESDAY 4 p.m.–8 p.m.

#1240—4 hours



Joy Santa Hat *Jill Fitzhenry*

Intermediate—\$44.25 Acrylic, Canvas, 11" x 14"

A wide variety of techniques are used to create this festive design: stencil, wet blend, float, stipple and more in the word JOY, a velvet Santa hat with fluffy fur and a festive snowflake background.

WEDNESDAY 4 p.m.–8 p.m.

#1250—4 hours



Thirty Mile Lighthouse *Gloria Greaves, CMOT*

Beginner—\$37.88 Pen & Ink/Oil Rouging,

Wood Plaque incl. Pitt Pen, 8" x 10"

The students will learn how background scrapbook paper can enhance a picture.

WEDNESDAY 4 p.m.–8 p.m.

#1260—4 hours

Teddies Friends *Sonja Richardson*

Int./Advanced—\$60.19
Acrylic, Metal Stand with
Wood Panel, 15" x 5"

Learn how to use different values of paint to make a project come alive.



WEDNESDAY 4 p.m.–8 p.m.

#1270—4 hours

North the Polar Bear *Susan Taber*

Beginner/Int.—\$54.88
Acrylic, Gourd Lamp
incl. Light Kit,
10" x 12"

*Learn how to drybrush
and how to pyramid
colors.*



WEDNESDAY 5 p.m.–9 p.m.

#1280—4 hours

Cabin in the Woods *Beth Wagner*

Intermediate—\$59.13
Acrylic, WC Paper incl.
Mat & Frame, 11" x 14"
Frame 15" x 12"

*If you love watercolors,
but are afraid to try a new
medium, you will love
this watercolor look using
acrylics. This design splays
out onto the mat which
will also be painted.*



WEDNESDAY 6 p.m.–10 p.m.

#1290—4 hours

Cross of Love *Bobbie Campbell, CDA*

Intermediate—\$52.75
Acrylic, Wood Cross,
18" x 10"

*Learn to have soft shadings
and highlights without
floating; great for painters
that do not float well.*



WEDNESDAY 6 p.m.–10 p.m.

#1300—4 hours



Egret River *Cindy Makowski*

Beginner—\$53.81

Pastels, Pastel Paper incl. Soft Pastel Set, 11" x 14"

Join me as we create a peaceful river scene for your Egrets to enjoy.

WEDNESDAY 6 p.m.–10 p.m.

#1310—4 hours

INTRO 101—WATERCOLORS



Geraniums in A Copper Pot *Fran Mittelstet*

Intro 101—\$42.13 Watercolor, WC Paper, 9" x 15"

You will learn watercolor basics, shading, highlighting, wet in wet and wet on dry while completing this project.

THURSDAY 8 a.m.–10 a.m.

#2010—2 hours



Geranium Wine Glass *Jill Fitzhenry*

Beginner/Int.—\$37.25

Glass Paint, Wine Glass incl. Brushes, 20 Oz.

Learn my easy tricks for painting on glass. The type of brushes and how you load are what makes painting on glass successful. See how I get great coverage with my glass painting techniques.

THURSDAY 8 a.m.–10 a.m.

#2020—2 hours



Poinsettia Batik Square *Anne Hunter*

Beginner/Intermediate—\$36.19 Acrylic, Wood & Fused Fabric

Ornament incl. Ribbon & Rhinestones, 6" x 6"

This little piece has lots of appeal, from the Batik fabric background, that is fused to the wooden square, to the jewels and ribbons that embellish the dramatic White Poinsettia.

THURSDAY 8 a.m.–12 noon

#2030—4 hours



White Cosmos *Maureen Baker*

Beginner/Int.—\$49.56

Acrylic, Hardboard incl. 1 Stamp, 9" x 12"

A really fun background makes this piece so great.

There is a stamp included in this project.

THURSDAY 8 a.m.–12 noon

#2040—4 hours



Bouquet on a Tray *Vicki Ferrusi*

Beginner/Intermediate—\$33.63

Acrylic, Oval Tray, 12" Oval *Easy flower bouquet adorns this cute trinket tray that would look good in any ladies boudoir.*

INTRO 101—TRY OILS!

THURSDAY 8 a.m.—12 noon

#2050—4 hours

Pretty in Pink

Nancy Scott, CDA

Beginner—\$42.13
Oil, Wood Box, 5" x 5" x 2.5"

Learn to paint in oils. Only three brushes needed!



THURSDAY 8 a.m.—3:00 p.m.

#2060—6 hours

High Tea

Lynne Andrews

Beginner/Int.—\$43.94
Acrylic, Large Wood Ornament, 6.25" x 5.5"

Who wants to celebrate with me? Come learn a variety of Lynne's techniques including how to create animal fur with a liner. We will also cover stippling and drybrushing. These cute little critters are sure to put a smile on your face!



THURSDAY 8 a.m.—3:00 p.m.

#2070—6 hours



Angelfish David Bailey

Intermediate—\$59.88

Watercolor, Pebbled Art Board incl. Paint Palette, 15" x 20"

Angelfish are fun to paint using watercolor medium.

It's a bright, colorful painting. Learn the use of blending paint with an ordinary kitchen sponge.

THURSDAY 8 a.m.—3:00 p.m.

#2080—6 hours

St. Nicholas

Paulette

DiGesare

Intermediate—\$47.13
Acrylic, Melamine Plate, 13"

Painted in traditional folk art style, this symbol of Christmas will be a beautiful addition to your Christmas décor.



THURSDAY 8 a.m.—3:00 p.m.

#2090—6 hours



Robin Choir Marlene Kreutz, CDA

Beginner/Intermediate—\$69.44

Acrylic, Wood Pencil Box, 5" x 14"

Learn to develop feather detail painting these fun whimsical robins.

THURSDAY 8 a.m.—3:00 p.m.

#2100—6 hours

Tea Time

Mark Menendez

Beginner/Int.—\$54.56
Colored Pencil/Acrylic, Canson Mi-Tientes Paper, 8.5" x 11"

Learn techniques including: many colors reflected in white; temperature, both cool and warm; reflective surfaces; transparent glass; metal and wood. Entire project done without heavy burnishing or layering.



THURSDAY 8 a.m.–3 p.m.

#2110—6 hours

Trilliums Judy Ribitch

Beginner—\$54.56
Acrylic, Wood Wall
Plaque, 18" x 10"

*Learn to soft drybrush
and stencil techniques
to create this design.*



THURSDAY 8 a.m.–3 p.m.

#2120—6 hours



Shell Collecting Mary Svenson, CDA

Beginner/Intermediate—\$65.19
Acrylic, Wood Wall Hanging, 10" x 21" x 1"
*This design uses multiple layering techniques to achieve realism
in the subject matter of New England Coastal shells.*

THURSDAY 8 a.m.–3 p.m.

#2130—6 hours



Midnight Meadow Susan Taber

Intermediate—
\$59.88
Acrylic, Gourd Lamp
incl. Light Kit,
10" x 12"

*Learn new drybrushing
techniques and water.*

THURSDAY 8 a.m.–3 p.m.

#2140—6 hours



Cherish Tree Chris Watson

Beginner/Int.—\$59.88
Acrylic, Wood Tree
w/Ornament incl. Stencil,
11" Tree/2.5" Ornament

*Learn to use textured
backgrounds to create interest.*

THURSDAY 8 a.m.–5 p.m.

#2150—8 hours



Monday Witches Bobbie Takashima

Intermediate—\$96.63
Acrylic, Rimmed Plate, 16"

*Monday Witches ride with their loot!! Fun, whimsical, and best of all
no stress project. Floating, drybrushing, highlighting and more....*

THURSDAY 11 a.m.–6 p.m.

#2160—6 hours



Red, White and Blue

Mark Polomchak

Intermediate—\$65.19
Watercolor, Illustration
Crescent Board incl. Paint
Palette, 15" x 20"

*Patriotic watercolor featuring
the Stars and Stripes of Old
Glory resting peacefully.
Featuring lifting highlights in
the flag using a #10 combo
brush and texturing to the
walls and windows using
splattering from a toothbrush.*

THURSDAY 11 a.m.–6 p.m.

#2170—6 hours



Wooly Pines Farm Wreath

Cynthia Erikson/Mary Anne Annunziato/Jackie Burke
 Beg./Int.—\$72.63 Wool Making/Acrylic, All-Inclusive Grapevine
 Wreath Kit with Wood Insert, Stencils, Wreath 10"–12"
*Learn to fringe and twirl wool to create branches and flower stems.
 Then paint, using stencils, the large glittery central ornament.*

THURSDAY 1 p.m.–5 p.m.

#2180—4 hours



Springtime Moss Rose *Bobbie Campbell, CDA*

Intermediate—\$44.25 Acrylic, Candy Dish Lid, 8"
*Learn to shade and highlight while painting on a napkin
 attached to an mdf board.*

THURSDAY 1 p.m.–5 p.m.

#2190—4 hours



A Sip of Spring *Gini Deaton*

Beginner/Intermediate—\$60.19
 Oil, Canvas, 16" x 12"
Learn to paint this hummingbird and beautiful flower in oils.

THURSDAY 1 p.m.–5 p.m.

#2200—4 hours

Perfect Perch *Kathy Swigon, CDA*

Beginner—\$44.25
 Acrylic, Canvas incl. Ribbon,
 9" x 11"

*A whimsical stroke design
 enhanced by a unique hanger.
 Add your own embellishments to
 show your creativity.*



THURSDAY 4 p.m.–6 p.m.

#2210—2 hours

Chick A Dee Conversation

Rosemary Barrett

Beginner/Int./Avanced—\$31.94
 Acrylic, Wood Ornament
 incl. Ribbon, 3"

*Learning the methods of blending
 and glazing techniques will give
 you confidence to explore more and
 feel comfortable with your paints.
 This ornament can be hung
 at any time or place.*



THURSDAY 4 p.m.–6 p.m.

#2220—2 hours



Holiday Glass Pendants *Tami Carmody*

Beginner/Intermediate—\$37.25
 Glass Enamels, (3) Glass Pendant incl. Chains & Rhinestones, 1.5"
*Wear your favorite necklace to dress up any outfit for the holidays.
 Paint these cute Glass pendants in Enamel paints.*

THURSDAY 4 p.m.–6 p.m.

#2230—2 hours



Poinsettia Wine Glass

Jill Fitzhenry

Intermediate—\$37.25
Glass Paint, Wine Glass
incl. Brushes, 20 oz.

Learn my easy tips and tricks to paint on glass and how to get good coverage.

THURSDAY 4 p.m.–6 p.m.

#2250—2 hours



Kuddly Koala

Cindy Makowski

Beginner—\$34.06
Acrylic, Turkey Feather
incl. Felt, Beads & Lashing,
Approx. 6"

Who doesn't love a cuddly koala? Join me for a quick introduction to feather painting.

THURSDAY 4 p.m.–6 p.m.

#2260—2 hours



Joy Ornament

Annamarie Oke

Beginner—\$42.56
Mixed-Media Acrylic,
Large Wood
Ornament incl.
Embellishments, 9"

Students will learn stenciling and adding mixed-media to pieces.

THURSDAY 4 p.m.–6 p.m.

#2270—2 hours



Winter Church Ornament

Nancy Scott, CDA

Intermediate—\$26.63
Acrylic, Wood
Ornament, 5"

This Christmas ornament with its soft winter colors would look lovely on your tree or make a wonderful gift for that special friend!

THURSDAY 4 p.m.–6 p.m.

#2280—2 hours



Believe Table Runner

Chris Watson

Beginner/Intermediate—\$37.25
Acrylic, Fabric Table Runner incl. Stencil, 36" Long
Learn wet on wet techniques using dome brushes.

Please be an **A+ student** and bring the appropriate supplies to class! You will find a list of **Basic Supplies by Medium** on **page 32**. You will be expected to have these supplies with you. If your teacher has requested **specific supplies** beyond this list, those are listed on **pages 33–35** by class number. Feel free to contact your teachers before Convention using the contact info on page 38 if you have specific questions. Thank you for studying up on the supplies that will help to make your class experience successful.

P.S. We are a friendly bunch, and you can often borrow from a neighbor in a pinch :)

FRIDAY 8 a.m.–12 noon

#3010—4 hours

Spring Blossoms

Julie Talariski

Beginner/Int.—\$35.75

Colored Pencil,

Mi-Tientes Paper incl.

Use of Pan Pastels,

9" x 12"

Use your colored pencils to create a variety of textures in this Spring inspired Still Life. Bi-colored blossoms, clear glass, soft ribbon, wood grained tabletop and a softly shaded background are all included.



FRIDAY 8 a.m.–12 noon

#3020—4 hours

Two Christmas Wine Totes

Beth Wagner

Beginner/Int.—\$48.50

Acrylic, (2) Linen

Wine Totes incl.

Embellishments,

6" x 14"

Paint on linen wine bags for a perfect gift!



FRIDAY 8 a.m.–12 noon

#3030—4 hours

Flowering Branches

Nancy Mullen

Intermediate—\$51.69

Acrylic, Decorative Wood

Plaque w/Stand, 4" x 6"

Join me for an opportunity to try the Maureen McNaughton style of details and their finishes.



FRIDAY 8 a.m.–12 noon

#3040—4 hours



Parisian Tulips Linda O'Connell, TDA

Intermediate—\$52.75

Acrylic, Zippered Canvas Tote, 20" x 15"

Create a functional tote bag adorned with flowers in the color of love. Painting on fabric has never been so easy, learning to use fabric paint and a filbert wave together is the trick to beautiful flowers.

Top it off with stenciling a bit of Paris.

FRIDAY 8 a.m.–12 noon

#3050—4 hours



Duo of Ornaments Dotty Pullo, CDA

Beginner—\$48.50

Acrylic, (2) Glass Frosted Ornaments incl. Stencil & Ribbon,

3.25" Round

Need a gift for someone special or a new ornament for your tree? Learn pointers on how to paint designs on small pieces.

CONVENTION ARTIST SPECIAL EVENT

FRIDAY 8 a.m.–12 noon

#3060—4 hours



Christmas Tea Nancy Scott, CDA

Intermediate—\$44.25 Bisque, Teapot Planter, 4" x 7"

Come paint this sweet little teapot adorned with a Christmas pointsettia and woodland accents. Enjoy a homemade sweet treat and maybe win a door prize!

FRIDAY 8 a.m.–3 p.m.

#3070—6 hours



Patty's Flag David Bailey

Intermediate—\$59.88

Watercolor, Pebbled Art Board incl. Paint Palette, 15" x 20"

Use a limited palette to paint this patriotic setting.

Lots of contrast make this painting really "POP."

FRIDAY 8 a.m.–3 p.m.

#3080—6 hours



Halloween Beware Judy Coates

Intermediate—\$49.25

Acrylic, Wood Bat, 20" x 10"

Lots of drybrushing to be learned. Spooky fun!

FRIDAY 8 a.m.–3 p.m.

#3090—6 hours



Bundles by the Barn Gini Deaton

Beginner/Intermediate—\$65.19

Oil, Canvas, 20" x 16"

Learn to oil paint this country farm scene with round hay bales and an old barn.

FRIDAY 8 a.m.–3 p.m.

#3100—6 hours



A Round of Lace Arlene Linton

Beginner/Int.—\$38.94

Acrylic, MDF Trivet incl. 2 Bottles of Paint, 8" Square

Learn and practice various painting techniques to reproduce delicate lace.

FRIDAY 8 a.m.–3 p.m.

#3110—6 hours



Batik Whimsical Flowers II Carol Spohn

Beginner—\$55.63

Watercolor Batik, WC Paper, (1) 10" x 12" x 11" or (4) 5" x 7"

More flowers, more whimsy, more fun. You chose whether to paint three frameable paintings or make many more card size.

I have a trick to make batik less frustrating!

FRIDAY 8 a.m.–5 p.m.

#3120—8 hours



A Whale's Tale Lynne Andrews

Beginner/Intermediate—\$45.31 Acrylic, Gourd, 7" x 10"

Create your own New England Whale's Tale using Lynne's unique techniques for shading, highlighting, and drybrushing!

FRIDAY 8 a.m.–5 p.m.

#3130—8 hours

Farm Fresh *Paulette DiGesare*

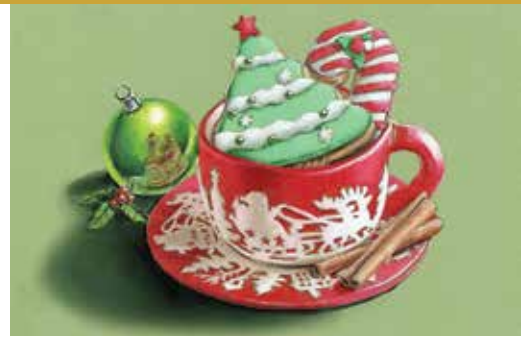
Intermediate—\$66.88
Acrylic, Wood Plaque
with Stand, 7" x 15"

*This stand-alone plaque
will stand out among
your pumpkins and
fall décor and become
a seasonal favorite.*



FRIDAY 8 a.m.–5 p.m.

#3140—8 hours



Christmas Cookies *Mark Menendez*

Beginner/Intermediate—\$61.56
Colored Pencil, Canson Mi-Tientes Paper, 8.5" x 11"
*Learn color pencil techniques such as reflections on metallic surfaces,
burnishing for smooth and vivid color, realistic 3-dimensional
design and use of complimentary colors.*

FRIDAY 8 a.m.–5 p.m.

#3150—8 hours

Noah's Christmas Ark Stocking *Bobbie Takashima*

Intermediate—\$64.75
Acrylic, Canvas Stocking
incl. Sakura Micro Pen,
8" x 12"

*Painting in watercolor
technique & inking on
canvas fabric.*



FRIDAY 1 p.m.–3 p.m.

#3160—2 hours



I See Snowflakes *Linda O'Connell, TDA*

Beginner/Intermediate—\$39.38 Acrylic, Wood Plate, 9.5"
*A great quick project packed with techniques: a fluffy snowman,
dimensional snowflakes, and lots of glitter to finish.*

FRIDAY 1 p.m.–5 p.m.

#3170—4 hours

Christmas Lighthouse Sled *Nancy Scott, CDA*

Intermediate—\$44.25
Acrylic, Wood Sled,
11" x 6" x 2.5"

*This New England scene
is the perfect addition
to your holiday décor!*



FRIDAY 1 p.m.–8 p.m.

#3180—6 hours

Winterberries and Ribbon *Bobbie Campbell, CDA*

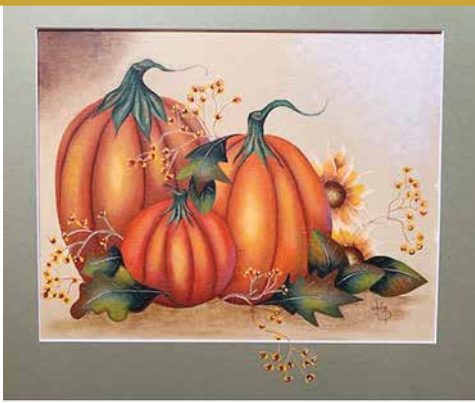
Intermediate—\$47.13
Acrylic, Wood Wall
Hanging, 12" x 8"

*Learn mixed media by
painting on a paper
background attached
to a wood surface.*



FRIDAY 1 p.m.–8 p.m.

#3190—6 hours



A Beginning Fall Harvest Sandy DeAngelo

Intermediate—\$54.56

Acrylic, Canvas Board incl. Mat, 16" x 20"

This is a lesson in floating color and the use of accents.

FRIDAY 1 p.m.–8 p.m.

#3200—6 hours



Celtic Santa Jill Fitzhenry

Advanced—\$59.88
Acrylic, Media Board,
10" x 15"

This Santa face is painted with a unique blending method. If you don't like to float color you may love this technique as an alternative. The Celtic knot design is used to trim Santa's velvet hat and coat.

FRIDAY 1 p.m.–8 p.m.

#3210—6 hours



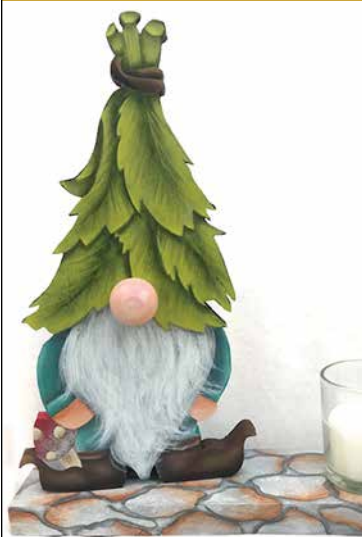
Believe in Christmas Judy Ribitch

Beginner/Int.—\$54.56
Acrylic, Wood Wall Plaque,
16.5" x 9.75"

Come paint this adorable Christmas scene. Learn how to use media paints with your regular acrylics.

FRIDAY 4 p.m.–8 p.m.

#3230—4 hours



Grooble Linda O'Connell, TDA

Intermediate—\$47.44
Acrylic, Wood incl. Base
& Candle, 10.5" x 10"

Join the gnome craze! Such a fun spring gnome on a base with a candle to light the way. Learn to create great leaves with a Mezzaluna, and stones with a few easy techniques.

FRIDAY 4 p.m.–8 p.m.

#3240—4 hours



Scarecrow Mark Polomchak

Beginner/Int.—\$60.19
Watercolor, Illustration
Board incl. Paint Palette,
15" x 20"

Fun and colorful depiction of a garden scarecrow surrounded by birch trees. Student will also learn toothbrush spattering!

FRIDAY 4 p.m.–8 p.m.

#3250—4 hours



Serenity Chris Watson

Beginner/Int.—\$42.13
Acrylic, Tin Plate, 8"

Learn the technique of using negative space to create values.

FRIDAY 6 p.m.–10 p.m.

#3260—4 hours

Hummingbird Delight Feeder *Tami Carmody*

Intermediate—\$60.19
Glass Enamels, Glass
Feeder, 8" x 6"

*Learn how to paint onto
glass with enamel paints.
Learn the tips, tricks
and ins and outs
of painting on glass.*



FRIDAY 6 p.m.–10 p.m.

#3270—4 hours

A Walk in the Woods *Marlene Fudge, CDA*

Intermediate—\$48.50
Acrylic, Gift Tag Wood
Plaque, 14" x 10"

*Learn techniques on
painting trees to create
your own forest.*



FRIDAY 6 p.m.–10 p.m.

#3280—4 hours



At Anchor *Anne Hunter*

Intermediate—\$44.78 Acrylic, Stretched Canvas, 8" x 10"
*The painting of the two dinghies anchored in rippling waters of the
bay is filled with lots of energy, while leaving the viewer with a peace-
ful feeling. Soft tints and shadows accent and support the two boats.*

FRIDAY 6 p.m.–10 p.m.

#3290—4 hours



Warm Winter Wishes *Sonja Richardson*

Advanced—\$46.38 Acrylic, Canvas, 11" x 14"
*Learn to use your background to enhance details. Reinforces
drybrushing and stippling to create a whimsical snowman.*

FRIDAY 6 p.m.–10 p.m.

#3300—4 hours



Duet *Carol Spohn*

All Levels—\$49.56 Watercolor, WC Paper, (2) 7" x 15"
Keep it fresh! Two different paintings using similar techniques.

FRIDAY 6 p.m.–10 p.m.

#3310—4 hours

The Cardinal Rules *Kathy Swigon, CDA*

Beginner/Int.—\$40.00
Acrylic, Wood Plaque incl.
Ribbon & Embellishments,
11" x 8.5"

*A fun design to add to your
winter décor. It's so easy to
create texture on the tissue
paper background.*



New! Friday Night Italian Buffet

5:30 p.m.–8:30 p.m., \$17, all inclusive!

Make your reservations through class registration and your Friday night dinner plans are set...

Stuffed Shells with Marinara Sauce, Meatballs, Garden Salad, Garlic Bread Sticks, and Assorted Italian Pastries will be available in the hotel courtyard...avoid the lines at local restaurants!



Game Night—BINGO!

7:30 p.m.–10:00 p.m.

Done with painting for the day but not quite ready to call it a night? Join us in Zachary's for a relaxing evening of fun and friendship, and a little game night competition. Bring your friends, play some cards, enjoy Bingo and mingle.

Door prizes galore!

\$15 (light snacks, prizes, surprises)

SATURDAY 8 a.m.–12 noon

#4010—4 hours



Bats and Cats Sonja Richardson

Beginner/Int.—\$45.31
Acrylic, Lighted Wood
Piece incl. Embellishments,
7" x 4" x 2"

*Basecoat in Black and
add your detail with
drybrushing.
New and fun!*

SATURDAY 8 a.m.–12 noon

#4020—4 hours



Hydrangea Table Topper Maureen Baker

Beginner/Intermediate—\$49.56
Acrylic, Canvas Table Topper incl. 2 Stencils, 16" x 14"
*Come paint beautiful hydrangeas. Two stencils included in this class!
A beautiful accent to enjoy every day.*

SATURDAY 8 a.m.–12 noon

#4030—4 hours



Deer Hill "Maskminder" Box Cynthia Erekson

Beginner/Intermediate—\$61.25
Acrylic, Covered Pine Box, 9" x 5" x 5"
*Now that masks are a part of everyday life, paint this box
to keep your masks safe, clean, and dry! Lift the box's lid
to retrieve your mask on the way out of the door...*

SATURDAY 8 a.m.–12 noon

#4040—4 hours



The Broom Shop Susan Taber

Beginner—\$54.88
Acrylic, Gourd Lamp
incl. Screen & Light Kit,
8" x 10"

*We will be learning
color pyramiding and
dry brush techniques
to create a beautiful
Broom Shop lamp.*

SATURDAY 8 a.m.–12 noon

#4050—4 hours

Henry Heron

Beth Wagner

Intermediate—\$50.63
Acrylic, Stretched Canvas,
12" x 24"

*This whimsical design is
perfect for bird lovers
and nature enthusiasts.
Unique, long, vertical design.*



SATURDAY 8 a.m.–3 p.m.

#4060—6 hours

Autumn Bounty

Lynne Andrews

Beginner/Int.—\$43.94
Acrylic, Large Wood
Mitten, 6.25" x 5.5"

*Santa is celebrating a
Fall Harvest! He brings
all of Lynne's favorite
techniques including
stippling, drybrushing,
creating beards, layering
of color and dotting.
This is sure to be a
fun class for everyone.*



SATURDAY 8 a.m.–3 p.m.

#4070—6 hours

All Star

Janice Cormier

Intermediate—\$51.91
Acrylic, Wooden Paddle,
5.5" x 24"

*This is a great piece for
any sport enthusiast.
The concentration will be
on background shading.
You will be using window
screening for a special technique
on the football and basketball.*



SATURDAY 8 a.m.–3 p.m.

#4080—6 hours



Buttons in a Basket

Gini Deaton

Beginner/Intermediate—\$65.19 Oil, Canvas, 14" x 14"
*Learn to oil paint the light as it falls on a basket of buttons
in this still life focused on sewing items.*

SATURDAY 8 a.m.–3 p.m.

#4090—6 hours

Birds of a Feather

Paulette DiGesare

Intermediate—\$52.44
Acrylic, Trinket Box,
4" x 4" x 6.5"

*Four different birds adorn
the sides of this custom box
that would make a great
candy or desk decoration.*



SATURDAY 8 a.m.–3 p.m.

#4100—6 hours

Puss N Boots

Jill Fitzhenry

Intermediate—\$54.56
Acrylic, Wood Plaque,
11.5" x 6.5" x .0125"

*Learn how to blend acrylics
with the look of oils on
the boot. Simple animal fur
technique is used to paint
the little kitty.*



SATURDAY 8 a.m.–3 p.m.

#4110—6 hours

Edwardian Lace

Arlene Linton

Beginner/Int.—\$59.88
Acrylic, Photo Frame,
11.75"

*Painting lace isn't
difficult as you learn
more about these
basic techniques.*



SATURDAY 8 a.m.–3 p.m.

#4120—6 hours



Catnap *Mark Menendez*

Beginner/Intermediate—\$54.56
Colored Pencil, Canson Mi-Tientes Paper, 8.5" x 11"
Slumbering in the warm fall sunshine.

SATURDAY 8 a.m.–3 p.m.

#4130—6 hours



Jingle *Linda O'Connell, TDA*

Beg./Int.—\$54.56 Fabric Paint, Pillow Cover, 20" x 20"
*Full pine branches are easy with one brush. Paint a round object to
look dimensional. I love this large pillow cover: buy one pillow insert
and change the cover; just hang the extras in a closet.*

SATURDAY 8 a.m.–3 p.m.

#4140—6 hours



My Father's Place *Mark Polomchak*

Intermediate—\$65.19
Watercolor, Illustration Board incl. Paint Palette, 15" x 20"
*A serene seascape with a two-tone drop down sky. Students will learn
how to formulate still water and the use of simple brushstroke.*

SATURDAY 8 a.m.–3 p.m.

#4150—6 hours

Box and Ornament *Dotty Pullo, CDA*

Intermediate—\$65.19
Acrylic, Wood Box and
Ornament incl. Stencil &
Gel Pen, 6" x 6" x 4.5"

*Get ready for holiday
painting by incorporating
metallics to give your high-
lights lots of drama. Tips for
blended backgrounds—make
them really pop with stencils
and stamp accents.*



SATURDAY 1 p.m.–5 p.m.

#4160—4 hours

A Joyful Noise *Anne Hunter*

Intermediate—\$55.94
Acrylic, Wood Tophat
Plaque, 8" x 10"

*The soft focus of the Rose
works well against the piano
keys. Add an inspirational
phrase and create a nice
home accent for any décor.*



SATURDAY 1 p.m.–5 p.m.

#4170—4 hours

Quilted Fraktur

Nancy Stauffer

Beginner—\$46.38
Acrylic & Colored Pencil,
Wood frame & WC Paper,
14.25" x 11"

We will be learning how to mottle a background, to paint with washes and shade with colored pencils, and the techniques to faux the frame.



SATURDAY 1 p.m.–8 p.m.

#4180—6 hours

Poppy

Marlene Kreutz,
CDA

Beg./Int.—\$64.13
Acrylic, Beaded
Wooden Plate, 12"

This poppy is developed with layers of floats to create the vivid orange petals surrounded with green leaves and buds.



SATURDAY 1 p.m.–8 p.m.

#4190—6 hours

Santa and Friend

Nancy Scott, CDA

Intermediate—\$49.25
Acrylic, Wood Tree w/
Ornament, 12" x 11" x 3.5"

Paint this unique standing Christmas tree with an ornament to match!



SATURDAY 4 p.m.–8 p.m.

#4200—4 hours

Special Bouquet

Sandy DeAngelo

Intermediate—\$49.56
Acrylic, Canvas Board
incl. Mat, 16" x 20"

Learn floating techniques, especially back-to-back floats.



SATURDAY 4 p.m.–8 p.m.

#4210—4 hours

Feast For the Heart

Gloria Greaves,
CMOT

Beginner—\$36.81
Pen & Ink/Oil Rouging,
Tile Trivet incl. Pitt Pen,
8" x 8"

The student will leave with a project that doesn't hang on the wall but can be used everyday.



SATURDAY 4 p.m.–8 p.m.

#4220—4 hours

Macro Poppy

Fran Mittelstet

Beg./Int.—\$46.38
Mixed-Media
Watercolor, WC Paper,
15" x 15"

In this multi-media class we will paint a poppy in watercolor. Learn to lose edges and paint ripples in petals, then add an acrylic background and spray webbing to finish.



SATURDAY 4 p.m.–8 p.m.

#4230—4 hours



Vintage Welcome Plaque

Nancy Mullen

Intermediate—\$67.63
Acrylic, Wooden
Welcome or House
Number Plaque, 7" x 11"

*Learn the Maureen
McNaughton style of
painting using strobework
and finishing details that
will please the eye!*

SATURDAY 4 p.m.–8 p.m.

#4240—4 hours



Spring Daffodils

Judy Ribitch

Beg./Int.—\$49.56
Acrylic, Wood Wall
Plaque, 10.25" x 7.75"

*Add soft layers of color,
stencils and paper to
enhance the design.*

SATURDAY 4 p.m.–8 p.m.

#4250—4 hours



Holiday Wreath *Kathy Swigon, CDA*

Beginner—\$37.88

Colored Pencil, Canvas Pillow Cover, 16" x 16"

This is a fun, easy to pencil, addition to your holiday décor.

SATURDAY 4 p.m.–8 p.m.

#4260—4 hours



Group Hug

Maxine Thomas

Intermediate—\$46.38
Acrylic, Wood Sign,
10" x 12"

*Santa sending a hug to
you along with Rudolph
and Frosty. Hang it and
let it remind you that
someone wants to give
you a hug today.*

SATURDAY 5 p.m.–9 p.m.

#4270—4 hours



Cardinal and Snowflakes *Paulette DiGesare*

Intermediate—\$42.13 Acrylic, Wooden Snowflake, 12"

*Add this to your seasonal décor. A beautiful wreath insert
with lots of "sparkle."*

SATURDAY 6 p.m.–10 p.m.

#4280—4 hours



Floral Stroke Plate

Tami Carmody

Beginner—\$35.75
Glass Enamels,
Glass Plate, 12"

*Learn how to paint
spring time florals all
done with stroke work
in enamel paints.*

SATURDAY 6 p.m.–10 p.m.

#4290—4 hours

Winter Words Annamarie Oke

Beginner—\$50.63
Acrylic, Wood Ornament,
12" Long

*A great piece to learn how to
stencil with a Stencil Pro brush
by Dynasty.*



SATURDAY 6 p.m.–10 p.m.

#4300—4 hours

My Brother Made Me Do It Sonja Richardson

Intermediate—\$49.56
Acrylic, Wood Box with
Stamp Lid incl. Wood Tag,
5" x 5" x 5"

*Learn to create a fluffy
snowman, wet dots and more!
A little added glitter will give
it some Christmas Magic!*



SATURDAY 6 p.m.–10 p.m.

#4310—4 hours

Coneflowers Beth Wagner

Intermediate—\$57.00
Acrylic, WC Paper incl.
Mat & Frame, 9" x 20"

*This "watercolor look"
is actually painted
in acrylics. Unique
vertical design.*



Stay Connected to NET!

Send your name and email address to
chair@newenglandtraditions.org
to get all the latest updates...

Be part of our NET Community!

Follow us on Facebook!

www.newenglandtraditions.org

*Enjoy one of these
fabulous 4-hour classes
on Sunday morning
before heading
home...*

SUNDAY 8 a.m.–12 noon

#5010—4 hours

God Bless America Fat Santa Lynne Andrews

Beginner/Int.—\$38.94
Acrylic, Wood Santa
Cutout incl. Rusty Bell
& Marker Pen,
11.5" x 7.25" x .25"

*Yes, even Santa celebrates
the Red, White and Blue.
This class is the perfect
stress-free class to learn a few
of Lynne's fun techniques.*



SUNDAY 8 a.m.–12 noon

#5020—4 hours



Christmas Noel *Judy Coates*

Intermediate—\$29.38
Acrylic, Wood
Ornament, 6" x 6"

*Fun with drybrushing!
Learn to add glitter by
fairy dusting.*

SUNDAY 8 a.m.–12 noon

#5030—4 hours



Christmas Magic *Marlene Fudge*

Intermediate—\$48.50
Acrylic, MDF Garden Plaque incl. Ribbon, 15" x 10.5"
*Create this whimsical Santa on an elegant background. A little
added glitter will give it some Christmas Magic!*

SUNDAY 8 a.m.–12 noon

#5040—4 hours



Bowl of Apples *Gloria Greaves, CMOT*

Beginner—\$41.06
Pen & Ink/Oil Rouging, Wood Plaque incl. Pitt Pen, 10" x 10"
The students will learn how to use oil rouging to create realistic apples.

SUNDAY 8 a.m.–12 noon

#5060—4 hours



A Rare Sighting *Anne Hunter*

Intermediate—\$43.19 Acrylic, Art Board, 8" sq.
*A rare yellow cardinal, found mostly in South America, makes a
stunning subject when painted over a plastic wrap faux finish.
A simple composition with lots of interest.*

SUNDAY 8 a.m.–12 noon

#5070—4 hours



Rocky Raccoon *Cindy Makowski*

Beginner—\$49.56
Scratch Art with Acrylic
Tints, Clay Scratchbord incl.
All Scratchbord Tools &
Glove, 8" x 10"
*Addictive! Learn how to use
tools to remove (scratch) the
ink off of a claybord. Learn
various strokes to create fine
fur lines and expressions and
how to use heavier strokes
to create tree bark.*

SUNDAY 8 a.m.–12 noon

#5080—4 hours



Summer's End *Fran Mittelstet*

Beginner/Int.—\$42.13
Watercolor, WC Paper,
11" x 11"
*In this class we will learn
to shade petals, use salt
for texture and mix
background colors
on the paper.*

SUNDAY 8 a.m.–12 noon

#5090—4 hours



Purple Passion *Linda O'Connell, TDA*

Intermediate—\$46.38

Premium Acrylic w/ Fluid Acrylic Overlay, Canvas, 9" x 12"
Create a rich spring blossom to adorn your home. Learn to work with highly pigmented tube acrylics with a filbert wave.
There is so much to learn as you create this flower.

SUNDAY 8 a.m.–12 noon

#5100—4 hours

Bicycle and Roses *Annamarie Oke*

Beginner/Int.—\$53.81
Mixed-Media Acrylic/Oil,
Gallery Canvas, 18" x 18"

This is a great piece to learn how to decoupage and how to use a palette knife as a brush for texture. Learn how to use Eye of the Tiger brushes for oils.



SUNDAY 8 a.m.–12 noon

#5110—4 hours



Tree Farm *Sonja Richardson*

Intermediate—\$49.56

Acrylic, Reversible Wood Décor, 15" x 8"
Red trucks are the rage! My version—new drybrushing technique without antiquing.

SUNDAY 8 a.m.–12 noon

#5120—4 hours



Touch of Gold *Kathy Swigon, CDA*

Beginner—\$53.81

Acrylic, Bombay Box incl. Glass Knob, 7" x 7"
An elegantly designed Bombay box enhanced with delicate strokes of gold. Glass knob reflects the sparkle.

SUNDAY 8 a.m.–12 noon

#5130—4 hours

Sam the Snowman *Susan Taber*

Beginner—\$54.88
Acrylic, Gourd incl.
Scarf, Wreath & Light
Kit, 8" x 10"

Learn how to drybrush and create sweet eyes and details.



SUNDAY 8 a.m.–12 noon

#5140—4 hours

Hibiscus Tote *Beth Wagner*

Intermediate—\$47.44
Acrylic, Canvas Tote
Bag, 15" x 15"

This painted design will be on a wonderful canvas tote bag.



NECC and the NET Team will be following State of Massachusetts health guidelines for NET 2021. By August 15, we will assess these guidelines and make a final decision on moving forward with, or canceling, NET 2021.

In the event of a cancellation by NECC, all payments received from registered attendees will be refunded, and you can cancel your hotel room block reservation without penalty.

NET 2021 Merchandise

Order now! Waiting for you when you check in!

NET 2021 "TEA KETTLE" SOUVENIR PIN
Metal, pewter finish, 1.25"
\$5.00



Place your order
for NET merchandise
by August 1
with your registration.
Your items will be
waiting for you at NET
starting October 5!

*Sales tax included in prices
where applicable.*



NET 2021 MUG \$9.03
14 oz.



NET DENIM SHIRT 100% cotton,
ink blue with embroidered
NET wreath Sizes: WOMEN'S
S, M, L, XL, 2X, 3X, 4X
\$29.75



NET FLEECE VEST
100% poly,
black with
embroidered
NET wreath
Sizes:
WOMEN'S
S, M, L, XL, 2X,
3X, 4X
ALSO MEN'S
S, M, L, XL
\$29.75

See sizing information at
NewEnglandTraditions.org

NET TOTE
Natural 12-oz.
canvas, with
embroidered
NET wreath,
burgundy trim
13" x 18" x 6"
28" straps
\$19.13



Basic Supplies by Medium

Acrylic Supplies

- ☐ A good assortment of brushes, including flats, angles, liners, rounds, filberts, mops, and any special brushes that may be listed for a particular class.
- ☐ Palette paper
- ☐ Tracing paper
- ☐ Transfer paper (both light and dark)
- ☐ Palette knife
- ☐ Stylus
- ☐ Paper towels
- ☐ Pencil
- ☐ Eraser
- ☐ Cotton swabs
- ☐ Container for water
- ☐ Brush cleaner
- ☐ Small containers in which to store paint should the project not be finished in class
- ☐ Scotch tape or painter's tape
- ☐ Optional: hand-held fan, scissors, photo holder, note paper

Oil Painting Supplies

- ☐ Graphite paper (gray and white)
- ☐ Tracing paper
- ☐ Stylus
- ☐ Drafting or artist's tape
- ☐ Paper towels
- ☐ Small containers for turpentine and medium
- ☐ Palette paper
- ☐ Palette knife
- ☐ Brushes (see individual teacher's requests)
- ☐ Bristle brushes (these are stiff bristles—not soft—for use on canvases), either flat or filbert, generally small, medium, and large
- ☐ Sable brushes for details (synthetics okay for some classes), usually a no. 2, no. 4, no. 8, and larger for larger surfaces
- ☐ Liners (long and short)
- ☐ Round or filbert if a stroke work class
- ☐ Optional: photo holder, note paper, plastic cling wrap to cover palette, aluminum foil for heat-set oils

Colored Pencil Supplies

- ☐ Non-wax graphite paper (gray and white)
- ☐ Tracing paper
- ☐ Stylus
- ☐ Drafting or artist's tape, 1"
- ☐ Battery-operated pencil sharpener
- ☐ Battery-operated eraser
- ☐ Erasers
- ☐ Paper towels
- ☐ 6" or 12" C-Thru ruler
- ☐ Foam core board or other flat surface for support.
- ☐ Optional: hand-held pencil sharpener, scissors, photo holder, note paper

Pastel Supplies

- ☐ Chamois cloth
- ☐ Paper towels
- ☐ Blending stumps
- ☐ Eraser (kneadable, white vinyl, etc.)
- ☐ Non-wax graphite paper
- ☐ Tracing paper
- ☐ Razor blade for sharpening
- ☐ Drafting or artist's tape, 1"
- ☐ Stylus

Watercolor Supplies

- ☐ Watercolor brushes (1" and 1 1/2" flats, no. 8 or no. 10 round, liner brush)
- ☐ 2 water containers
- ☐ Non-wax graphite paper (gray and white)
- ☐ Masking fluid
- ☐ Tracing paper
- ☐ Double-ball stylus
- ☐ Drafting or artist's tape, 1"
- ☐ Pencil and sharpener
- ☐ White vinyl eraser
- ☐ Cotton swabs
- ☐ Spray bottle
- ☐ Palette
- ☐ Paper towels (cut into quarters)
- ☐ Hand-held fan
- ☐ Scissors
- ☐ Toothbrush for spattering
- ☐ 6" or 12" C-Thru ruler
- ☐ Optional: photo holder, assorted sponges (well rinsed), sea sponges, synthetic sponges, note paper, 1-ounce container for masking fluid (old water bottle cap works well), old no. 1 round brush for masking fluid, small bar of soap for masking fluid.

A Note About Lighting

You may wish to bring a small, battery-operated desk light to enhance the overhead lighting provided in our classrooms.

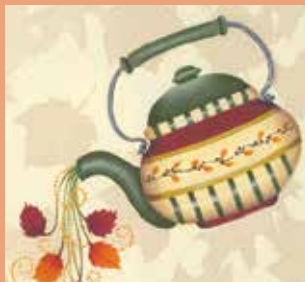
Special Class Supplies

Please note! Basic Supplies by Medium (acrylics, oils, colored pencils, pastels, and watercolors) are listed on page 32. In addition, you should bring the special items listed below to class. If you have questions about substitutions for these special supplies, please contact the teacher directly (see page 40). Due to lighting conditions in some classrooms, you may want to bring a battery-operated light for your personal use.

- 999 Glass Art #3 round & wave angle, liner, #12 flat, (3) sm. sponge pounces, usual acrylic supplies
- 1010 Usual acrylic supplies
- 1020 Sm. angled flats 1/8", 1/4" & 3/8", fine liner #10/0 or #20/0, #1 or #2 round, usual acrylic supplies
- 1030 1/4" & 3/4" flat or angle, #1 or #2 sm. round detail, usual acrylic supplies
- 1040 #2 round, #3 or #4 round, #10/0 liner, 1/2" flat or angle, usual acrylic supplies
- 1050 No supplies needed
- 1060 1/2" Maxine's mop, 3/8" or 1/2" Lunar blender, usual acrylic supplies
- 1070 Usual acrylic supplies
- 1080 3/4" soft flat brush, 1/4" soft filbert brush, liner, mop, palette knife, usual oil supplies
- 1090 Scharff (3000) #4 fine liner, usual acrylic supplies
- 1100 Prismacolor Premier Pencils: 208, 901, 903, 908, 914, 916, 922, 924, 927, 935, 938, 941, 944, 1001, 1005, 1024, 1031, 1086, 1091, 1077 colorless blender, 1/2" shader, #1 round, #8 round, water basin, paper towels, small palette, usual cp supplies
- 1110 1" wash brush, #10 round combo brush, #6 combo script liner, toothbrush, towel, wax free graphite, usual wc supplies
- 1120 Domed blender, stencil brush, usual acrylic supplies
- 1130 Mops, usual acrylic supplies
- 1140 Stencil brush, usual acrylic supplies
- 1150 LA floater (3020) #4 & #8, good asst. of mops, stippler (3014) #4 & #8, usual acrylic supplies
- 1160 Prismacolor pencils: Celadon, Kelly, Limepeel, Dark Green, Sage, Lilac, Parma Violet, Imperial Violet, Violet, Indigo Blue, Yellow Chartreuse, White, Sky Blue, Dark Purple, Cool Grey 10%, 20% & 50%, Violet Blue, mounting board, soft brush, Scotch Magic tape, tortillons, stylis, usual cp supplies
- 1170 Usual acrylic supplies
- 1180 #5/0 liner, #2 round, #6 & #12 shader, 1/2" mop, med. & lg. Mezzaluna brush, usual acrylic supplies
- 1190 Asst. JS (1370) flats or JS 1345 angles, JS(1365) #5/0 script liner or JS (4015) or JS (1362) mid liners series, JS(1360) #2 & #5 short liner, Sableon JS (3020) #2, JS(3010) #6, JS (3005) #2, usual acrylic supplies
- 1200 Usual acrylic supplies
- 1210 1" wash brush, #10 round, #6 liner, water container, non-wax graphite paper, kitchen sponge, toothbrush, usual wc supplies
- 1220 #3 round Glass Art brush, #12 flat, liner, #6 flat, #2 filbert, stipple brush, sm. sponge pouncer, usual acrylic supplies
- 1230 Favorite drybrush, JS #1 round, Black Identi pen, usual acrylic supplies
- 1240 1/2" angle, #5 round, lg. Jillybean Dirty Dancer brush, #10/0 script, 3/4" flat, 1/4" rake, 1/2" stencil pro, usual acrylic supplies
- 1250 No supplies needed
- 1260 Sm. mop, tape, usual acrylic supplies
- 1270 Usual acrylic supplies
- 1280 Splatter tool, usual acrylic supplies
- 1290 Asst. flats, #1 liner, Bobbie's blenders, usual acrylic supplies
- 1300 Paper towels or old wash cloth, tape, gloves, usual pastel supplies
- 1310 #8 or #10 round with good point, pop-up tissues, usual wc supplies
- 2010 Usual acrylic supplies
- 2020 3/8" angle, #6/0 liner, usual acrylic supplies
- 2030 Dynasty Black Gold 1" wash, #8 & #12 chisel blender, Decoart Traditions #3/0 liner, #4 round, palette knife, usual acrylic supplies
- 2040 Usual acrylic supplies
- 2050 Paper towels, 2 sm. containers with lids for mediums, sm. mop brush, #2 & #4 Cheri Rol blenders or equivalent, usual oil supplies
- 2060 LA floater (3020) #4 & #8, LA stippler (3014) #6, good asst. of sm. mops, usual acrylic supplies
- 2070 1" wash brush, #10 round, #6 liner, water container, non-wax graphite paper, kitchen sponge, toothbrush, usual wc supplies
- 2080 Sm. angled flats, stencil brush, bring your own snowflakes stencil from 3/8" to 1 1/4", liner brush, usual acrylic supplies
- 2090 1/4" and 3/8" angle, usual acrylic supplies
- 2100 ONLY Prismacolor: 908, 911, 931, 935, 938, 942, 943, 944, 947, 989, 993, 994, 1003, 1005, 1017, 1019, 1025, 1026, 1058, 1076, 1077, 1083, 140, drawing board, soft brush, White vinyl eraser, #1 round brush, water basin, paper towels, usual cp & acrylic supplies
- 2110 Domed blender, stencil brush, usual acrylic supplies
- 2120 Short liners JS 1360 ,#2, #4, & #5; script liner JS 1350 #5/0 or mid liner, JS 4015 #5/0; flats JS 1370 #6 & #10 or angles JS 1345 1/4", 3/8", 1/2" & 3/4" filberts JS 1385 #2, & #6; JS 1375 wash 3/4", usual acrylic supplies
- 2130 Usual acrylic supplies
- 2140 Usual acrylic supplies
- 2150 Jo Sonja's Brushes: #0 & #2 pointed round, #2 Sableon round, #2 detailer, 1/2" angle, 3/8" oval wash, usual acrylic supplies
- 2160 1" wash brush, #10 round combo brush, #6 combo script liner, toothbrush, towel, wax free graphite, usual wc supplies
- 2170 Painters tape, palette knife, stencil brushes (2) 1/2", (1) 3/4" & (1) 1/4", Scharff #222 Moon brush #6, old scruffy brush, usual acrylic painting supplies
- 2180 Asst. flats, #1 liner, #8 filbert, Bobbie's blenders, usual acrylic supplies
- 2190 3/4" soft flat brush, 1/4" soft filbert, liner, mop, palette knife, usual oil supplies
- 2200 #3 round, #8 flat, #0 liner, usual acrylic supplies
- 2210 Usual acrylic supplies
- 2220 #1 round Glass Art brush, #4 flat, liner, sm. stipple brush, sm. sponge pouncer, usual acrylic supplies
- 2230 Usual acrylic supplies
- 2250 1/4" angle or flat, sm. round detail #1, script liner, usual acrylic

- supplies
- 2260 #1 script liner, #12 flat, lg. stencil brush. lg. flat, usual acrylic supplies
- 2270 Sm. angles, #10/0 liner, sm. mop, usual acrylic supplies
- 2280 Langnickel (5005) Royal sable #8 or #10, usual acrylic supplies
- 3010 Prismacolor Premier Pencils: 902 Ultramarine, 913 Spring Green, 924 Crimson Red, 926 Carmine Red, 938 White, 1004 Yellow Chartreuse, 1005 Lime Peel, 1030 Raspberry, 1061 Cool Grey 30%, 1063 Cool Grey 50%, 1065 Cool Grey 70%, 1067 Cool Grey 90%, 1090 Kelp Green, sharpener, lg. soft brush, eraser, firm backer board, usual cp supplies
- 3020 Usual acrylic supplies
- 3030 M. McNaughton brushes: filbert #4, rounds: #3 & #4, liners: #0 & #5/0, Pro-stippler #10 & #6, mop brush #2, sm. sta-wet palette, usual acrylic supplies
- 3040 1/2" shader, #2 shader, #8 Faux Squirrel filbert wave, 1/4" & 3/4" mop, #14 chisel blender, sable drybrush, usual acrylic supplies
- 3050 Old #10 or #12 flat or sm. foliage brush, #10/0 liner, usual acrylic supplies
- 3060 #10/0 liner, mop brush, usual acrylic supplies
- 3070 1" wash brush, #10 round, #6 liner, water container, non-wax graphite paper, kitchen sponge, toothbrush, usual wc supplies
- 3080 JS pointed round blender #6 or #8, favorite drybrushes, #4 flat, usual acrylic supplies
- 3090 3/4" soft flat brush, 1/4" soft filbert brush, liner, mop, palette knife, usual oil supplies
- 3100 Usual acrylic supplies
- 3110 Black Micron pen or Indenti pen, usual wc supplies
- 3120 A good liner, ruler, wc brushes, usual wc supplies
- 3130 Sm. angled flats, #1 or #2 round, liner brush, sm. mop 1/4" or 3/8", white chalk pencil, optional stencil from Creative Coach or border dots #BCS224, usual acrylic supplies
- 3140 Prismacolor Premier Pencils: 908, 909, 910, 912, 926, 927, 928, 935, 937, 938, 939, 941, 943, 947, 989, 1033, 1059, 1063, 1096, 122, usual cp supplies
- 3150 Jo Sonja's Brushes: #1 or #2 detailer; #0 pointed round 2040 Series; 1/2" angle; #2 Sableon round 3010 series; 1/4" oval wash; 1/2" natural bristle fan brush; palette knife, usual acrylic supplies.
- 3160 3/4" wash, (2) 1" stencil pro, #4 shader, #10/0 liner, #14 chisel blender, med. Mezzaluna, palette knife, usual acrylic supplies
- 3170 Asst. angles incl. 3/4" or 1", mops, #10/0 liner, usual acrylic supplies
- 3180 Asst. of good liners, #1 flat, 1/4" comb brush, Bobbie's blenders, usual acrylic supplies
- 3190 3/4" floating brush, lg. stippler, usual acrylic supplies
- 3200 3/4" flat, 1/2" angle, #10/0 script, #5 round, 1/2" stencil pro, sm. & lg. Jillybean dirty dancers brushes, usual acrylic supplies
- 3210 Circles template (circles at least 1 3/4"), domed dry brush, ruler, pencil, usual acrylic supplies
- 3230 #10 shader, #14 chisel blender, lge. Mezzaluna, faux squirrel #2 rigger, 1/2" filbert rake, #4 shader, usual acrylic supplies
- 3240 1" wash brush, #10 round combo brush, #6 combo script liner, toothbrush, towel, wax free graphite, usual wc supplies
- 3250 Lynne Andrews stipple #6 & #8, usual acrylic supplies
- 3260 #1 & #3 Glass Art brushes, #2 filbert, liner, #10 flat, sm. stencil brush, usual acrylic supplies
- 3270 #10 & #18 shader (or angle), #1 script liner, #5/0 liner, 3/4" mop, Dynasty Mezzaluna - lg. & xlg., White transfer paper, usual acrylic supplies
- 3280 1/2" angle, 1/2" filbert, usual acrylic supplies
- 3290 Tape, ruler, fluffy drybrush #8, usual acrylic supplies
- 3300 Pencil, ruler, usual wc supplies
- 3310 #3 round, #1 short liner, #8 flat or #8 filbert, usual acrylic supplies
- 4010 Fluffy drybrush #8 or smaller, extra fine Black permanent marker, usual acrylic supplies
- 4020 Dynasty Black Gold 1" wash, #4, #8 & #12 chisel blender, Decoart Traditions 3/0 liner, #6 filbert, Stencil pro 1/2" stencil brush, usual acrylic supplies
- 4030 Scruffy brush, Scharff "stain-it" brush #6 or #8, stencil brushes (1 lg., 3 med., 1 sm.), painters tape, palette knife, usual acrylic supplies
- 4040 Stencil brushes, #2 round, 3/8" angle, usual acrylic supplies
- 4050 Usual acrylic supplies
- 4060 LA stippler (3014) #4 & #6, LA (3020) #4, good asst. sm. mops, usual acrylic supplies
- 4070 Stencil brush, usual acrylic supplies
- 4080 3/4" soft flat brush, 1/4" soft filbert brush, liner, mop, palette knife, usual oil supplies
- 4090 Sm. angled flats, #1 or #2 round, liner brush, usual acrylic supplies
- 4100 3/8" angle, Jillybean sm. Dirty Dancer, #10/0 script, 1/4" rake, usual acrylic supplies
- 4110 Scharff (3000) #4 fine liner, usual acrylic supplies
- 4120 Prismacolor Premier Pencils: 914, 921, 927, 928, 935, 938, 939, 941, 944, 947, 1002, 1012, 1024, 1026, 1032, 1034, 1063, 1065, 1077 colorless blender, 12" ruler, usual cp supplies
- 4130 #2 Faux squirrel rigger, 1/2" stencil pro, #14 chisel blender, #2 & #10 shader, #12 sable drybrush mop, 1/4" angle, #4 & #8 filbert wave, usual acrylic supplies
- 4140 1" wash brush, #10 round combo brush, #6 combo script liner, toothbrush, towel, wax free graphite, usual wc supplies
- 4150 Stencil brush, #10/0 liner, usual acrylic supplies
- 4160 1/8" lettering brush, usual acrylic supplies
- 4170 Prismacolor Watercolor pencils: 935 Black, 943 Burnt Ochre, 1009 Dahlia Purple, 1090 Kelp Green, 921 Pale Vermillion, 1027 Peacock Blue, 945 Sienna Brown, 938 White, eraser, pencil sharpener, usual wc pencil supplies
- 4180 1/4" and 3/8" angle, usual acrylic supplies
- 4190 Various size angles and rounds, 10/0 liner, mop, usual acrylic supplies
- 4200 3/4" wash brush, lg. stippler, usual acrylic supplies
- 4210 No supplies needed
- 4220 #8 or #10 round with good point, pop-up tissues, 3/4" or 1" flat, usual wc supplies
- 4230 M. McNaughton brushes: rounds #8, #6, #5, #4, #3, & #2, liners: #0 & #5/0, sm. sta-wet palette, usual acrylic supplies
- 4240 Domed blender, usual acrylic supplies
- 4250 Prismacolor pencils: 916 Canary Yellow, 918 Orange, 926 Carmine Red, 925 Crimson Lake, 1078 Black Cherry, 1005 Lime Peel, 908 Dark Green, 938 White, backboard, #8 filbert, Black Indenti pen, usual cp supplies
- 4260 1/2" Maxine's mop, 3/8" or 1/2" Lunar blender, usual acrylic supplies
- 4270 Angled flats, mop brush, fine liners for detail, #1 or #2 round brush, usual acrylic supplies
- 4280 #2 filbert, liner, #4 flat, usual acrylic supplies
- 4290 Lg. stencil brush, lg. flat brush, #12 flat, #1 script liner, usual

- acrylic supplies
- 4300 Med. round brush, extra fine permanent Black marker, usual acrylic supplies
- 4310 Usual acrylic supplies
- 5010 Crescent rake brush, mops, Lynne Andrews #4 & #8 (3020) floater, usual acrylic supplies
- 5020 JS #6 or #8 pointed round blender or favorite drybrushes, #18/0 liner, usual acrylic supplies
- 5030 #8 & #14 shader (or angle brush), #5/0 liner, 1/4" rake, 3/4" mop, Dynasty Mezzaluna- lg., stiff fan brush or toothbrush (for spattering snow), usual acrylic supplies.
- 5040 No supplies needed
- 5060 #4 filbert, 1/4" rake, usual acrylic supplies
- 5070 1/4" & 3/4" flat or angle, #1 or #2 sm. round detail, usual acrylic supplies
- 5080 #8 or #10 round with good point, pop-up tissues, usual wc supplies
- 5090 #14 chisel blender, 3/8" & 1/4" deerfoot, faux squirrel #8 filbert wave, Black Gold #4 filbert wave, usual acrylic supplies
- 5100 Lg. flat wash, #12 flat, #1 script liner, usual acrylic & oil supplies
- 5110 Fluffy drybrush #8 or smaller, tape, sm. mop, usual acrylic supplies
- 5120 #3 round, #1 short liner, #1 script liner, usual acrylic supplies
- 5130 Usual acrylic supplies
- 5140 Usual acrylic supplies



We LOVE, LOVE, LOVE Our Volunteers!

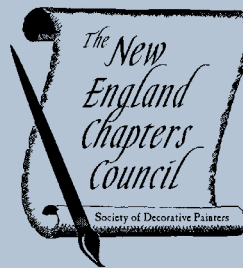
VOLUNTEER as a class monitor or any one of the dozens of jobs at Convention that lend a PERSONAL TOUCH.
Check YES when registering!

2021 Volunteer Rewards Program

6 hrs. of service (at Convention) = NET 2021 Volunteer Pin
30 hrs. (at Convention) = Pin & free 4-hour class
at NET 2022

Volunteer coordinators will place you where you are needed most, based on your availability.
Volunteer by contacting 2021 volunteer coordinators Sylvia Ulion and Cathy Fare at volunteer@newenglandtraditions.org.

Just a few hours makes a big difference!



New England Traditions is a production of the New England Chapters Council, an association of seven Chapters of the Society of Decorative Painters in New England and the Albany, New York area, whose purpose is to promote decorative painting through cooperation. Together, we represent nearly 300 members of the Society of Decorative Painters.

NECC/NET Officers & Advisors

Kristine Beckman, NECC President
Gloria Greaves, NECC Vice President
Dorey Joy, NECC/NET Secretary
Cheryl Barb, NECC Treasurer/NET Asst. Treasurer
Eileen "Rocky" Rockwell, NECC Advisor
Robin Prout, NET Chair
Kathy Kirch, NET Assistant Chair
Dorey Joy, NET Treasurer

2021 Member Chapters and their Council Representatives:

Cape Cod Mayflower Decorative Painters
Claire Bartlett and Barbara Perry

Capitolers
Sylvia Ulion and Cathy Fare

Sea Strokes of Maine Decorative Painters
Bonnie Rand

Tole 'n ME
Beverly Haskell

White Mountain Decorative Painters' Guild
Larry Provencher

Yankee Heritage Tole Chapter
Mary St. Pierre

Many thanks to our 2021 Class Selection Committee:

Dorey Joy/Selection Chairperson/
Capitolers & Sea Strokes
Diane Michaud/Tole 'n Me
Sue Dowds/Capitolers
Bonnie Rand/Sea Strokes
Lynn Barbadora/Cape Cod Mayflower Decorative Painters
Barbara Rolla/Yankee Heritage
Carolyn Swasey/WMDPG
Kris Beckman/NECC
Eileen (Rocky) Rockwell/NECC
Sylvia Ulion/NECC Rep.
Beverly Haskell/NECC Rep.
Mary St. Pierre/NECC Rep.
Ronnie Brate/NET

Mail-In Registration Form—NET 2021

1 Personal Information

Name _____
 Badge First Name _____
☐ New to NET, invited by _____
 Street _____
 City _____ State _____ Zip _____
 Phone (home) _____ (cell) _____
 SDP Chapter _____
 E-mail address _____

Please attach written note if you need special accommodations to participate.

2 Registration Fees

\$ _____

Postmarked NO EARLIER THAN May 5 Full Daily
 and no later than Sept. 1, 2021 \$80 \$32
 Postmarked after Sept. 1, 2021 \$90 \$37

If registering daily, please indicate day or days:

☐ Tues/Wed ☐ Thurs ☐ Fri ☐ Sat ☐ Sun (\$10)

3 Class/Event Fees

\$ _____

4 Friday Night Specials

\$ _____

Game Night, 7:30–10:00 p.m. _____ ticket @\$15
 Italian Buffet, 5:30–8:30 p.m. _____ ticket @\$17

5 Merchandise

\$ _____

6 GRAND TOTAL

\$ _____

Total all fees from Parts 2, 3, 4 and 5 above.

7 Payment Method

☐ Check ☐ Money Order

Please make check or money order payable to NET.
 U.S. funds only. Please enclose total amount due.

☐ MasterCard ☐ Visa ☐ Discover

Card Number _____
 Cardholder _____
 Expiration Date ____ / ____ CVV ____
 Signature _____

Mail registration BY REGULAR MAIL to:
 NET Registration/Ronnie Brate
 31 Sawyer Place, Albany, NY 12208

**MAIL-IN REGISTRATIONS MUST BE POSTMARKED NO EARLIER
 THAN MAY 5 AND NO LATER THAN SEPTEMBER 20!**

Registration cancellations must be requested in writing by
 September 1, 2020, to receive 50% registration fee refund.
 Class and project fees are non-refundable after July 15 (see page 4).
 NOTE: \$30 returned check fee. For information: (518) 410-4716
 or e-mail: registration@newenglandtraditions.org

Please assign me no more than ____ classes per day.

YES! I WILL BE A CLASS MONITOR ☐ Yes ☐ No

YES! I WILL VOUNTEER ELSEWHERE ☐ Yes ☐ No

Day arrive _____ time _____

Day depart _____ time _____

☐ Please help me find a roommate.

Form may be duplicated. Please retain a copy for your records.

3 Class & Special Event Fees

Class No.	Class Time	Total Fees
Evening—TUESDAY		

Class No.	Class Time	Total Fees
Morning—WEDNESDAY		
1 st Choice		
2 nd Choice		

Class No.	Class Time	Total Fees
Afternoon—WEDNESDAY		
1 st Choice		
2 nd Choice		

Class No.	Class Time	Total Fees
Evening—WEDNESDAY		
1 st Choice		
2 nd Choice		

Class No.	Class Time	Total Fees
Morning—THURSDAY		
1 st Choice		
2 nd Choice		

Class No.	Class Time	Total Fees
Afternoon—THURSDAY		
1 st Choice		
2 nd Choice		

Class No.	Class Time	Total Fees
Morning—FRIDAY		
1 st Choice		
2 nd Choice		

Class No.	Class Time	Total Fees
Afternoon—FRIDAY		
1 st Choice		
2 nd Choice		

Class No.	Class Time	Total Fees
Evening—FRIDAY		
1 st Choice		
2 nd Choice		

Class No.	Class Time	Total Fees
Morning—SATURDAY		
1 st Choice		
2 nd Choice		

Class No.	Class Time	Total Fees
Afternoon—SATURDAY		
1 st Choice		
2 nd Choice		

Class No.	Class Time	Total Fees
Evening—SATURDAY		
1 st Choice		
2 nd Choice		

Class No.	Class Time	Total Fees
SUNDAY		
1 st Choice		
2 nd Choice		

Total Fees	
PART THREE TOTAL	

Be sure to include all information above.

Total Fees are listed under each class photo and in special event ads.
 Calculate highest possible class & event fees above if sending check.

5 NET Merchandise (see page 31)

NET 2021 MUG QTY: _____ x \$ 9.03 = _____
 DENIM SHIRT QTY: _____ SIZE: _____ x \$29.75 = _____
 FLEECE VEST QTY: _____ SIZE: W _____ M _____ x \$29.75 = _____
 TOTE BAG QTY: _____ x \$19.13 = _____
 2021 PIN QTY: _____ x \$ 5.00 = _____

PART FIVE TOTAL	
-----------------	--

Mail-In Registration CHECKLIST

Did you remember to....

- _____ **Make your hotel reservation (see page 6)?**
We expect a sold-out room block this year, so don't delay!
- _____ **Fill out Part 1 of the registration form completely?**
- _____ List your Chapter Affiliation?
- _____ Place your **NET MERCHANDISE** order (see page 31)?
- _____ List two classes for each time period if you have a 2nd choice
(mail-in registration only)?
- _____ Sign up for our **ITALIAN BUFFET ON FRIDAY?**
- _____ Register for Friday's **GAME NIGHT?**
- _____ Volunteer to be a class monitor and/or to help in another area?
- _____ Make a copy of the registration form for your records?
- _____ Complete the credit card information and sign,
or enclose your check or money order (payable to NET)
for registration, classes, and Special Event fees? (U.S. funds only)
- _____ Mail your registration by regular mail—
postmarked on or after May 5.

If you are registering on or after September 20 by mail, please email or call
Registration Chair Ronnie Brate to walk through your registration.
She can be reached at registration@newenglandtraditions.org or (518) 410-4716.
Online registration is open until September 30.

Our 2021 Teaching Team

Artist & Email	Projects on Page	Artist & Email	Projects on Page	Artist & Email	Projects on Page
Lynne Andrews 10, 14, 19, 24, 28 <i>lynn@lynnandrews.com</i>		Bonnie Frederico, CDA 10 <i>bonnie.frederico@gmail.com</i>		Sonja Richardson 10, 12, 22, <i>sonjastreasures@aol.com</i> 23, 28, 30	
Mary Annunziato 16 <i>woolypines@comcast.net</i>		Marlene Fudge 11, 22, 29 <i>Paintingmarlene@gmail.com</i>		Nancy Scott, CDA 7, 14, 17, 18, <i>nscottcda@gmail.com</i> 20, 26	
David Bailey 11, 14, 19 <i>allofmyart@aol.com</i>		Gloria Greaves, CMOT 12, 26, 29 <i>ggreaves@nycap.rr.com</i>		Carol Spohn 19, 22 <i>carol@carolspohn.com</i>	
Maureen Baker 13, 23 <i>maureenjbaker@msn.com</i>		Anne Hunter 10, 13, 22, 25, 29 <i>creativetouch@earthlink.net</i>		Nancy Stauffer 26 <i>nanpaints@comcast.net</i>	
Rosemary Barrett 9, 16 <i>rbarrettstudios@gmail.com</i>		Marlene Kreutz, CDA 14, 26 <i>mfolkart12@gmail.com</i>		Mary Svenson, CDA 11, 15 <i>tolesampler@comcast.net</i>	
Jackie Burke 16 <i>woolypines@comcast.net</i>		Arlene Linton 9, 19, 25 <i>ArleneLintonArtist@gmail.com</i>		Kathy Swigon, CDA 16, 22, 27, 30 <i>kswigon@yahoo.com</i>	
Bobbie Campbell, CDA 12, 16, 20 <i>bobbie@bobbiecampbell.com</i>		Cindy Makowski 8, 13, 17, 29 <i>cindysbrushstrokes@gmail.com</i>		Susan Taber 12, 15, 23, 30 <i>suehollon@yahoo.com</i>	
Tami Carmody 7, 8, 11, 16, 22, 27 <i>wisteriapainting@aol.com</i>		Mark Menendez 9, 14, 20, 25 <i>menendezartstudio@yahoo.com</i>		Bobbie Takashima 15, 20 <i>bobbietarts@gmail.com</i>	
Judy Coates 11, 19, 29 <i>rcyou@aol.com</i>		Fran Mittelstet 13, 26, 29 <i>fran_mittelstet@otmail.com</i>		Julie Talarski 8, 18 <i>jmt9983@yahoo.com</i>	
Janice Cormier 8, 24 <i>countryschoolhse@aol.com</i>		Nancy Mullen 18, 27 <i>nmdeco5@charter.net</i>		Maxine Thomas 9, 27 <i>stippler@aol.com</i>	
Sandy DeAngelo 21, 26 <i>bearpaw1@ptd.net</i>		Linda O'Connell, TDA 18, 20, 21, <i>lc6058@aol.com</i> 25, 30		Beth Wagner 10, 12, 18, 28, <i>bethwagnerdesigns@yahoo.com</i> 30	
Gini Deaton 9, 16, 19, 24 <i>ginideaton@gmail.com</i>		Annamarie Oke 17, 28, 30 <i>annamarie860@gmail.com</i>		Christine Watson 15, 17, 21, 24 <i>chriswatsondesigns@hotmail.com</i>	
Paulette DiGesare 8, 14, 20, 24, 27 <i>phdpainter@live.com</i>		Mark Polomchak 9, 15, 21, 25 <i>mark@polomchak.com</i>			
Cynthia Erikson 16, 23 <i>cynthia.erikson@gmail.com</i>		Dotty Pullo, CDA 18, 25 <i>rosedapullo@gmail.com</i>			
Vicki Ferrusi 11, 13 <i>vickiferrusi@yahoo.com</i>		Bonnie Rae-Smith 8 <i>tinsellbaby5858@yahoo.com</i>			
Jill Fitzhenry 12, 13, 17, 21, 24 <i>jillybeandesigns@aol.com</i>		Judy Ribitch 10, 15, 21, 27 <i>judy@ribitch.com</i>			

Our teachers are always willing to answer your questions about projects and supplies!



New England Traditions is a production of the New England Chapters Council
of the Society of Decorative Painters.

Sponsoring Council members:
Cape Cod Mayflower Decorative Artists, Capitolers,
Sea Strokes of Maine Decorative Painters,
Tole 'n ME, White Mountain Decorative Painters' Guild,
and Yankee Heritage Tole Chapter.

www.newenglandtraditions.org

Autumn Leaves & CreativiTEA theme artwork designed by Nancy Scott, CDA ©2019 NECC
New England Traditions logo designed by Arlene Beck, MDA ©1998 NECC